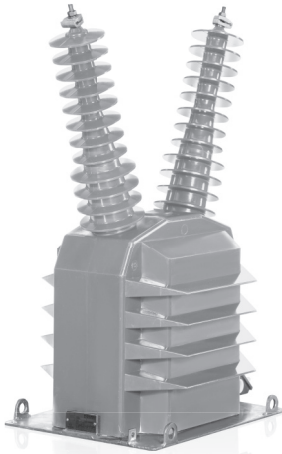


# VRU-52

## 46 kV VOLTAGE TRANSFORMER



**OUTDOOR  
60 Hertz**

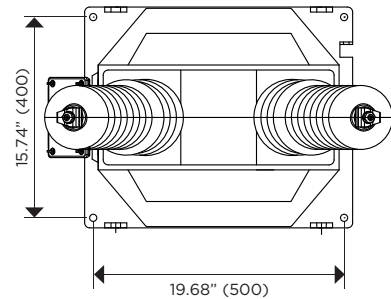
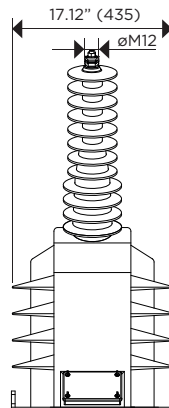
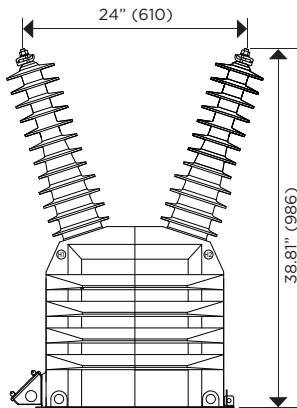
ARTECHE UR/VR series are dry type outdoor service voltage transformers. The core is encapsulated with Type B epoxy resin which provides excellent internal dielectric properties and mechanical strength. The external layer of Cycloaliphatic Epoxy Resin (CEP) provides resistance to ultraviolet rays and the effects of tracking and erosion on the exterior of the transformer ensuring a long mechanical and electrical life. The transformer is maintenance free.

The external layer can be manufactured with Hydrophobic Cycloaliphatic Epoxy Resin (HCEP) which improves service life expectancy due to its improved tracking and erosion resistance. HCEP additionally increases the transformer's weatherability and offers better performance in heavily polluted environments.

The core is built with high permeability grain oriented silicon steel laminations for low losses. The windings are copper wire with copper plate double isolation. The concentric distribution of the coils prevents magnetic flux leakage, achieving greater accuracy and higher capacity to withstand mechanical stresses in adverse operating conditions.

Partial Discharge measurements exceed the IEEE, CAN/CSA and IEC requirements.

Mechanical characteristics		Weight (lbs.)	Creepage distance (in)	Strike distance (in)
Insulation Material	Colors	394	61.41	24
Resin	Gray*			



Drawing number: 9449540

	PRIMARY TERMINAL	GROUND TERMINAL	SECONDARY TERMINAL
CONNECTIONS	<p>Type: TE-4T Material: Copper Range: 8SOL-4TRE</p>	<p>Type: TE-12-250 Material: Copper Range: 4TRE-250MCM</p>	<p>Type: Quick Connector Material: Brass</p>

	ONE SECONDARY	TWO SECONDARIES	ONE SECONDARY WITH TAP	TWO SECONDARIES WITH TAP
MARKING (Single Primary Ratio)				

Approximate dimensions in inches (mm). • \* Brown color available upon request

# VRU-52

## 46 kV VOLTAGE TRANSFORMER

Electrical characteristics												
Code * (CEP)	Ratio	Primary (V)	Secondary (V)	IEEE Metering Accuracy	Continuous Rated Voltage Factor (Un)	Rated Voltage Factor 30 s (Un)	Thermal Burden (VA)	Nominal Voltage System (kV)	BIL (kV)	Power-Frequency Withstand Voltage (1 min)		
										Primary & Secondary (kV <sub>rms</sub> )	Secondary Winding (kV <sub>rms</sub> )	
757981240	240:1	27600/47804Y	115	0.3 W,X,M,Y,Z,ZZ	1.1	1.25	3000	46	250	95	2.5	
757982240	240 & 240:1	27600/47804Y	115 & 115	0.3 W,X,M,Y,Z & 0.3 W,X,M,Y,Z	1.1	1.25	1500 & 1500	46	250	95	2.5	
757983400	240/400:1	27600/47804Y	115/69	0.3 W,X,M,Y,Z	1.1	1.25	3000	46	250	95	2.5	
757981400	400:1	46000/46000Y	115	0.3 W,X,M,Y,Z,ZZ	1.1	1.25	3000	46	250	95	2.5	
757982400	400 & 400:1	46000/46000Y	115 & 115	0.3 W,X,M,Y,Z & 0.3 W,X,M,Y,Z	1.1	1.25	1500 & 1500	46	250	95	2.5	
757983666	400/666.66:1	46000/46000Y	115/69	0.3 W,X,M,Y,Z	1.1	1.25	3000	46	250	95	2.5	
757989240	240:1	27600/47804Y	115	0.15 W,X,M,Y,Z	1.1	1.25	3000	46	250	95	2.5	
757986400	240/400:1	27600/47804Y	115/69	0.15 W,X,M,Y	1.1	1.25	3000	46	250	95	2.5	
757989400	400:1	46000/46000Y	115	0.15 W,X,M,Y,Z	1.1	1.25	3000	46	250	95	2.5	

**\* For HCEP Option add (-H) to the end of the code number.**  
Additional ratings available upon request.

### Notes:

.....

.....

.....

.....

.....

.....

.....

.....

.....

.....

.....

.....

.....

.....

.....

.....

.....

.....

.....

.....

.....