

# UENS-17

## 15 kV VOLTAGE TRANSFORMER



ARTECHE UENS series are dry type indoor service voltage transformers. The core is encapsulated with Type B epoxy resin which provides excellent internal dielectric properties and mechanical strength, ensuring a long mechanical and electrical life. The transformer is maintenance free.

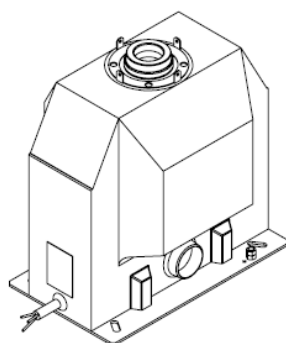
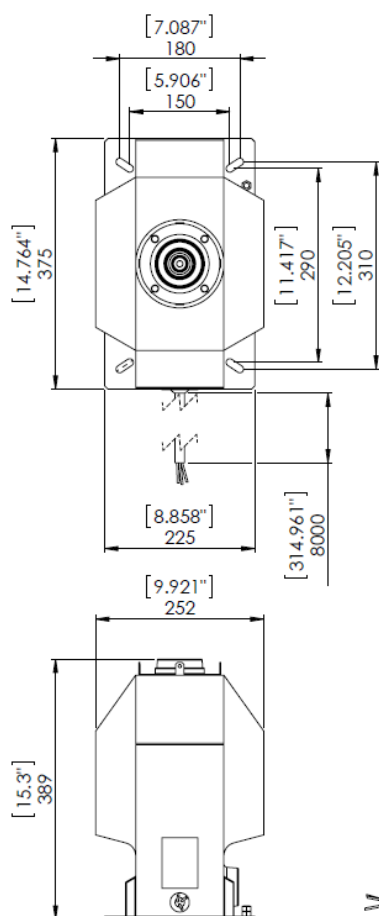
The core is built with high permeability grain oriented silicon steel laminations for low losses. The windings are copper wire with copper plate double isolation. The concentric distribution of the coils prevents magnetic flux leakage, achieving greater accuracy and higher capacity to withstand mechanical stresses in adverse operating conditions.

Partial Discharge measurements exceed the IEEE, CAN/CSA and IEC requirements.

The new design is a voltage transformer for 19 feet (about 6 meter) intermittent submersible application with metallic coating. The model is cast in epoxy resin and is strongly insulated to environment. The UENS (single phase) models are metering units and are rated for use up to 15kV submersible operation up to 110kV BIL. The medium voltage terminals are bushing wells compatible with IEEE 386 interfaces.

### Mechanical characteristics

Insulation Material	Colors	Weight (kg.)
Resin	Gray*	60



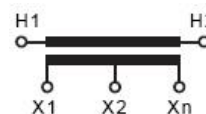
MARKING  
(Single primary ratio)

1 SECONDARY



MARKING  
(Double ratio)

1 SECONDARY



Approximate dimensions in inches (mm).

# UENS-17

## 15 kV VOLTAGE TRANSFORMER

### Electrical characteristics

Ratio	Primary (V)	Secondary (V)	IEEE Metering Accuracy	Continuous Rated Voltage Factor (Un)	Rated Voltage Factor 30s (Un)	Thermal Burden (VA)	Nominal Voltage System (kV)	BIL (kV)	Power-Frequency Withstand Voltage (1min)	
									Primary & Secondary (kV <sub>rms</sub> )	Secondary Winding (kV <sub>rms</sub> )
20:1	2400/4160GY	120	0.3 W,X,M,Y	1.1	1.25	1000	15	110	34	2.5
35:1	4200/7280GY	120	0.3 W,X,M,Y	1.1	1.25	1000	15	110	34	2.5
60:1	7200/12470GY	120	0.3 W,X,M,Y	1.1	1.25	1000	15	110	34	2.5
63.5:1	7620/13200GY	120	0.3 W,X,M,Y	1.1	1.25	1000	15	110	34	2.5
70:1	8400/14560GY	120	0.3 W,X,M,Y	1.1	1.25	1000	15	110	34	2.5
83.33:1	10000/10000GY	120	0.3 W,X,M,Y	1.1	1.25	1000	15	110	34	2.5
100:1	12000/12000GY	120	0.3 W,X,M,Y	1.1	1.25	1000	15	110	34	2.5
110:1	13200/13200GY	120	0.3 W,X,M,Y	1.1	1.25	1000	15	110	34	2.5
120:1	13800/13800GY	115	0.3 W,X,M,Y	1.1	1.25	1000	15	110	34	2.5
120:1	14400/14400GY	120	0.3 W,X,M,Y	1.1	1.25	1000	15	110	34	2.5

*Other characteristics on request.*

**Secondary terminals:**

- **19' Submersible wire**

Notes: \_\_\_\_\_  
 \_\_\_\_\_  
 \_\_\_\_\_  
 \_\_\_\_\_  
 \_\_\_\_\_  
 \_\_\_\_\_  
 \_\_\_\_\_  
 \_\_\_\_\_  
 \_\_\_\_\_  
 \_\_\_\_\_  
 \_\_\_\_\_  
 \_\_\_\_\_  
 \_\_\_\_\_  
 \_\_\_\_\_  
 \_\_\_\_\_  
 \_\_\_\_\_  
 \_\_\_\_\_  
 \_\_\_\_\_  
 \_\_\_\_\_  
 \_\_\_\_\_