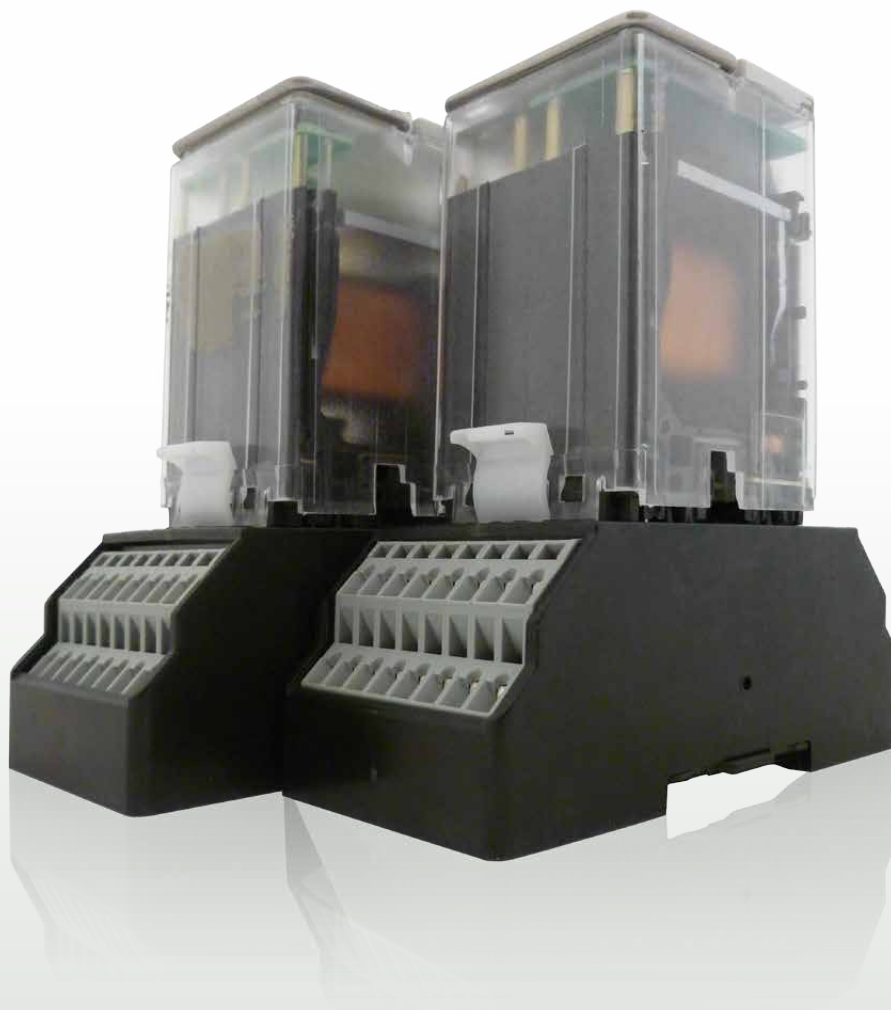


arteche

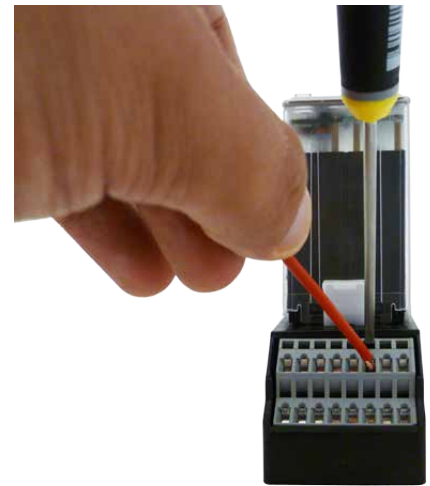


Front Connection Spring
Type Socket

The Front Connection Spring Type Sockets by Arteche are a solution for the railway industry, the best accessories for our full range of 4 contact relays in terms of reliability and endurance.

Main features

- › Easy and fast to connect by the user.
- › Safer connection.
- › Reduced wiring time.
- › Reduced replacement time.
- › Maintenance-free.
- › Keeps reliability of all the components.
- › Wide range of use in different temperature or damp conditions.



Tests and standards

Electrical Tests

| | | |
|---------------------|--------------|---------------------|
| Dielectric strength | IEC 60255-27 | 2kV 50Hz 1min |
| Surge withstand | IEC 60255-27 | 5 Kv 0,5 J 1,2/50 s |
| Insulation | IEC 60255-27 | 500Vcc >100MΩ |

Environmental Test

| | | |
|-----------------------------------|-------------|------------------------------------|
| Thermal shock | IEC 60068-2 | +70°C / -25°C / 5 cycles of 3h+3h. |
| Damp heat | IEC 60068-2 | 40°C / 93%Hr / 4 days |
| Temperature rise at rated voltage | EN 61810-7 | 55°C / 10A / 3h |

Mechanical Test

| | | |
|------------------------|---------------------------------|----------------------------------------------------|
| Sinusoidal vibrations | EN 60068-2-6 | Fc |
| Shock | EN 60068-2-27 | Ea, 5Hz - 8 Hz: 3,5mm amplitude. 8Hz - 150 Hz: 1g. |
| Bump test | EN 60068-2-29 | Eb, 15 g / 11 ms. |
| Seismic qualifications | IEEE 344-2004, IEEE C37.98-1987 | ZPA 5 |
| Free fall test | EN 60068-2-32 | Procedure 1, 1000mm / 2 falls from each X, Y y Z |

Ingress Protection

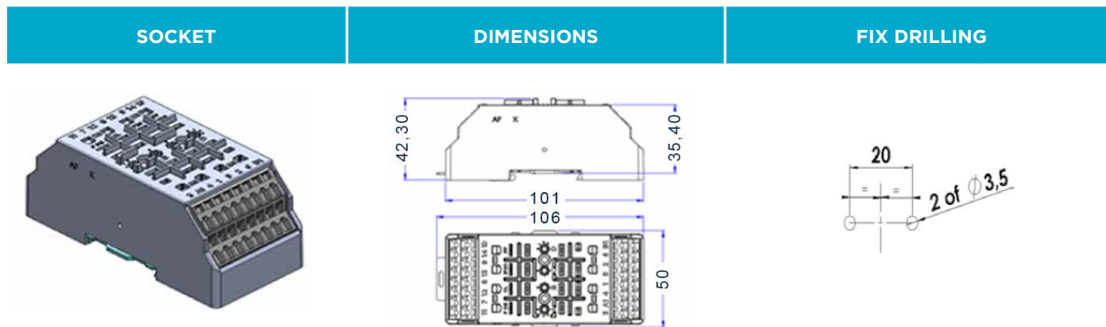
IP20 Protection

Compatible relays:

- › RF OP
- › TDF OP
- › VDF10 OP
- › BF
- › CF
- › RBF







Dimensions



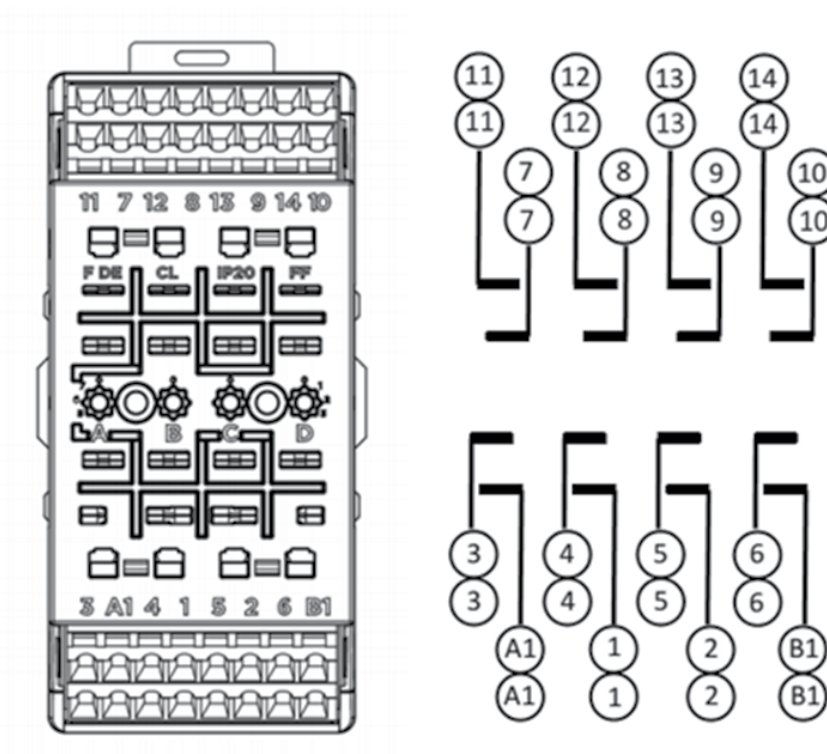
F DE CL IP20

Terminal

| TYPE | | MAX. WIRE SECTION. | QUANTITY |
|------------------------------------------|------------------------------------------------------------------------------------|---------------------------|----------|
| RIGID (Stripped wire length: 5 - 6mm) |  | 0,08 - 2,5mm ² | 1+1 |
| FLEXIBLE (Stripped wire length: 5 - 6mm) |  | 0,08 - 2,5mm ² | 1+1 |
| TIP ISOLATE TERMINAL |  | 0,25 - 1,5mm ² | 1+1 |
| TIP WITHOUT ISOLATE TERMINAL |  | 0,25 - 2,5mm ² | 1+1 |

(Flat screwdriver 0,4 x 3,5mm maximum)

Wiring diagram



› 2 holes on the terminal block for each connection



arteche
Moving together



ARTECHE_FY_Spring_EN

Version: 1.1

©ARTECHE