

# CRF-17

## 15 kV CURRENT TRANSFORMER



**OUTDOOR  
60 Hertz**

ARTECHE CR series are dry type outdoor service current transformers. The core is encapsulated with Type B epoxy resin which provides excellent internal dielectric properties and mechanical strength. The external layer of Cycloaliphatic Epoxy Resin (CEP) provides resistance to ultraviolet rays and the effects of tracking and erosion on the exterior of the transformer ensuring a long mechanical and electrical life. The transformer is maintenance free.

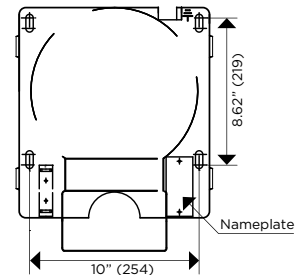
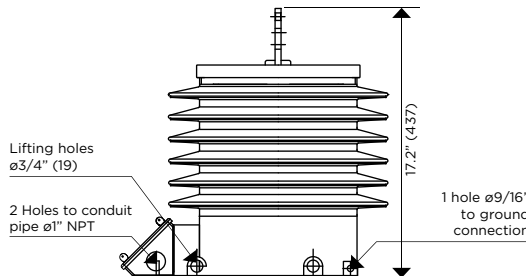
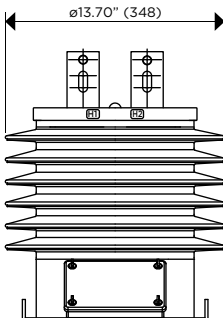
The external layer can be manufactured with Hydrophobic Cycloaliphatic Epoxy Resin (HCEP) which improves service life expectancy due to its improved tracking and erosion resistance. HCEP additionally increases the transformer's weatherability and offers better performance in heavily polluted environments.

The core is built with high permeability grain oriented silicon steel laminations for low losses. The windings are copper wire with copper plate double isolation. The concentric distribution of the coils prevents magnetic flux leakage, achieving greater accuracy and higher capacity to withstand mechanical stresses in adverse operating conditions.

Partial Discharge measurements exceed the IEEE, CAN/CSA and IEC requirements.

### Mechanical characteristics

Insulation Material	Colors	Weight (lbs.)	Creepage distance (in)	Strike distance (in)
Resin	Gray*	112.4	27.55	12



Drawing number: 4286582/4287310\*\*

	PRIMARY TERMINAL	GROUND CONNECTOR	SECONDARY TERMINAL		ONE SECONDARY
CONNECTIONS					
	Type: NEMA-2 Material: Copper	Type: NEMA-4 Material: Copper	Type: TE-12-250 Material: Copper Range: 4TRE-250MCM	Type: Quick Connector Material: Brass	MARKING (Single Primary Ratio)
					ONE SECONDARY with tap 

NEMA 2 THICKNESS	3/8"	1/2"	3/4"
AMPERES	0 TO 1200	1201 TO 1500	1501 TO 2000

Approximate dimensions in inches (mm).  
\* Brown color available upon request.

# CRF-17

## 15 kV CURRENT TRANSFORMER

Electrical characteristics											Power-Frequency Withstand Voltage (1 min)	
Code (CEP)	Code (HCEP)	Current Ratio (Primary: Secondary) (A)	Continuous Thermal Current Rating Factor @ 30°C	Short-time Thermal Current (kA/1s)	Short-time Mechanical Current (kA <sub>peak</sub> )	IEEE Metering Accuracy	Relay Accuracy	Nominal Voltage System (kV)	BIL (kV)	Power-Frequency Withstand Voltage (1 min)		
										Primary & Secondary (kV <sub>rms</sub> )	Secondary Winding (kV <sub>rms</sub> )	
756191001	756190000-H	5:5	1.5	0.5	0.95	0.3B-1.8	T200	15	110	34	2.5	
756191002	756190001-H	10:5	1.5	1	1.9	0.3B-1.8	T200	15	110	34	2.5	
756191003	756190002-H	15:5	1.5	1.5	2.85	0.3B-1.8	T200	15	110	34	2.5	
756191004	756190003-H	20:5	1.5	2	3.8	0.3B-1.8	T200	15	110	34	2.5	
756191005	756190004-H	25:5	1.5	2.5	4.75	0.3B-1.8	T200	15	110	34	2.5	
756191006	756190005-H	30:5	1.5	3	5.7	0.3B-1.8	T200	15	110	34	2.5	
756191008	756190006-H	40:5	1.5	4	7.6	0.3B-1.8	T200	15	110	34	2.5	
756191010	756190007-H	50:5	1.5	5	9.5	0.3B-1.8	T200	15	110	34	2.5	
756191012	756190008-H	60:5	1.5	6	11.4	0.3B-1.8	T200	15	110	34	2.5	
756191015	756190009-H	75:5	1.5	7.5	14.25	0.3B-1.8	T200	15	110	34	2.5	
756191020	756190010-H	100:5	1.5	10	19	0.3B-1.8	T200	15	110	34	2.5	
756191030	756190011-H	150:5	1.5	15	37.5	0.3B-1.8	T200	15	110	34	2.5	
756191040	756190012-H	200:5	1.5	20	50	0.3B-1.8	T200	15	110	34	2.5	
756191060	756190013-H	300:5	1.5	30	75	0.3B-1.8	T200	15	110	34	2.5	
756191080	756190014-H	400:5	1.5	40	100	0.3B-1.8	T200	15	110	34	2.5	
756191120	756190015-H	600:5	1.5	60	86.7	0.3B-1.8	T200	15	110	34	2.5	
756191160	756190016-H	800:5	1.2	60	114	0.3B-1.8	T200	15	110	34	2.5	
756191200	756190017-H	1000:5	1.0	75	142.5	0.3B-1.8	T200	15	110	34	2.5	
756191240	756190018-H	1200:5	1.0	90	171	0.3B-1.8	T200	15	110	34	2.5	
756192001	756190030-H	5/10:5	2.0/1.5	1	1.9	0.3B-0.9/0.3B-1.8	T100/200	15	110	34	2.5	
756192002	756190031-H	10/20:5	2.0/1.5	2	3.8	0.3B-0.9/0.3B-1.8	T100/200	15	110	34	2.5	
756192005	756190032-H	25/50:5	2.0/1.5	5	9.5	0.3B-0.9/0.3B-1.8	T100/200	15	110	34	2.5	
756192006	756190033-H	30/60:5	2.0/1.5	6	11.4	0.3B-0.9/0.3B-1.8	T100/200	15	110	34	2.5	
756192010	756190034-H	50/100:5	2.0/1.5	10	19	0.3B-0.9/0.3B-1.8	T100/200	15	110	34	2.5	
756192015	756190035-H	75/150:5	2.0/1.5	15	28.5	0.3B-0.9/0.3B-1.8	T100/200	15	110	34	2.5	
756192020	756190036-H	100/200:5	2.0/1.5	20	38	0.3B-0.9/0.3B-1.8	T100/200	15	110	34	2.5	
756192030	756190037-H	150/300:5	2.0/1.5	30	57	0.3B-0.9/0.3B-1.8	T100/200	15	110	34	2.5	
756192040	756190038-H	200/400:5	2.0/1.5	40	76	0.3B-0.9/0.3B-1.8	T100/200	15	110	34	2.5	
756192060	756190039-H	300/600:5	2.0/1.5	60	86.7	0.3B-0.9/0.3B-1.8	T100/200	15	110	34	2.5	
756192080	756190040-H	400/800:5	1.2/1.2	60	114	0.3B-0.9/0.3B-1.8	T100/200	15	110	34	2.5	
756192100	756190041-H	500/1000:5	1.0/1.0	75	142.5	0.3B-0.9/0.3B-1.8	T100/200	15	110	34	2.5	
756192120	756190042-H	600/1200:5	1.0/1.0	90	171	0.3B-0.9/0.3B-1.8	T100/200	15	110	34	2.5	
756199001	756190043-H	5:5	1.5	0.5	0.95	0.15B-0.9	-	15	110	34	2.5	
756199002	756190044-H	10:5	1.5	1	1.9	0.15B-0.9	-	15	110	34	2.5	
756199010	756190045-H	50:5	1.5	5	9.5	0.15B-0.9	-	15	110	34	2.5	
756199015	756190046-H	75:5	1.5	7.5	14.25	0.15B-0.9	-	15	110	34	2.5	
756199040	756190047-H	100:5	1.5	10	19	0.15B-0.9	-	15	110	34	2.5	
756199120	756190048-H	600:5	1.5	10	19	0.15B-0.9	-	15	110	34	2.5	
756199160	756190049-H	800:5	1.2	60	86.7	0.15B-0.9	-	15	110	34	2.5	
756199200	756190050-H	1000:5	1.0	60	114	0.15B-0.9	-	15	110	34	2.5	
756199240	756190051-H	1200:5	1.0	90	171	0.15B-0.9	-	15	110	34	2.5	
756198001	756190052-H	5/10:5	2.0/1.5	1	1.9	0.15B-0.5/0.15B-0.9	-	15	110	34	2.5	
756198002	756190053-H	10/20:5	2.0/1.5	2	3.8	0.15B-0.5/0.15B-0.9	-	15	110	34	2.5	
756198060	756190054-H	300/600:5	2.0/1.5	60	86.7	0.15B-0.5/0.15B-0.9	-	15	110	34	2.5	
756198080	756190055-H	400/800:5	1.2/1.2	60	114	0.15B-0.5/0.15B-0.9	-	15	110	34	2.5	
756198100	756190056-H	500/1000:5	1.0/1.0	75	142.5	0.15B-0.5/0.15B-0.9	-	15	110	34	2.5	
756198120	756190057-H	600/1200:5	1.0/1.0	90	171	0.15B-0.5/0.15B-0.9	-	15	110	34	2.5	

# CRF-17

## 15 kV CURRENT TRANSFORMER

### Electrical characteristics

Code (CEP)	Code (HCEP)	Current Ratio (Primary: Secondary) (A)	Continuous Thermal Current Rating Factor @ 30°C	Short-time Thermal Current (kA/1s)	Short-time Mechanical Current (kA <sub>peak</sub> )	IEEE Metering Accuracy	Relay Accuracy	Nominal Voltage System (kV)	BIL (kV)	Power-Frequency Withstand Voltage (1 min)	
										Primary & Secondary (kV <sub>rms</sub> )	Secondary Winding (kV <sub>rms</sub> )
<b>High Accuracy Extended Range 5% nominal current to Rating Factor</b>											
756197001	756190061-H	5:5	2.0	0.5	0.95	0.15S B-0.5	-	15	110	34	2.5
756197002	756190062-H	10:5	2.0	1	1.9	0.15S B-0.5	-	15	110	34	2.5
756197010	756190063-H	50:5	2.0	5	9.5	0.15S B-0.5	-	15	110	34	2.5
756197015	756190064-H	75:5	2.0	7.5	14.25	0.15S B-0.5	-	15	110	34	2.5
756197100	756190065-H	100:5	2.0	10	19	0.15S B-0.5	-	15	110	34	2.5
756197120	756190066-H	600:5	2.0	10	19	0.15S B-0.5	-	15	110	34	2.5
756197160	756190067-H	800:5	1.5	60	86.7	0.15S B-0.9	-	15	110	34	2.5
756197200	756190068-H	1000:5	1.2	60	114	0.15S B-0.9	-	15	110	34	2.5
756197240	756190069-H	1200:5	1.2	90	171	0.15S B-0.9	-	15	110	34	2.5
<b>High Accuracy Extended Range 1% nominal current to Rating Factor</b>											
756196040	756190091-H	200:5	4.0	10	19	0.15 B-1.8	-	15	110	34	2.5
756196120	756190092-H	600:5	3.0	10	19	0.15 B-1.8	-	15	110	34	2.5
756196200	756190093-H	1000:5	2.0	60	114	0.15 B-1.8	-	15	110	34	2.5
756196240	756190094-H	1200:5	1.5	90	171	0.15 B-1.8	-	15	110	34	2.5

Additional ratings available upon request.

