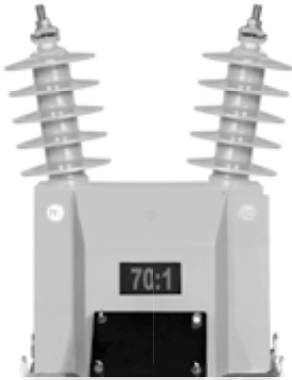


# VRJ-24

# 25 kV VOLTAGE TRANSFORMER



**OUTDOOR**  
**60 Hertz**

ARTECHE UR/VR series are dry type outdoor service voltage transformers. The core is encapsulated with Type B epoxy resin which provides excellent internal dielectric properties and mechanical strength. The external layer of Cycloaliphatic Epoxy Resin (CEP) provides resistance to ultraviolet rays and the effects of tracking and erosion on the exterior of the transformer ensuring a long mechanical and electrical life. The transformer is maintenance free.

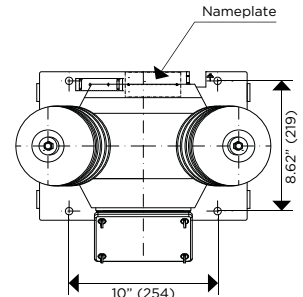
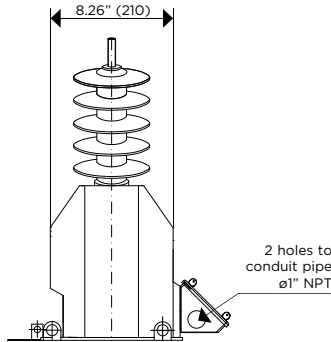
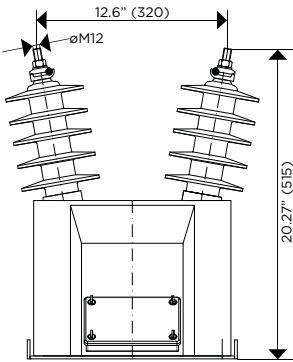
The external layer can be manufactured with Hydrophobic Cycloaliphatic Epoxy Resin (HCEP) which improves service life expectancy due to its improved tracking and erosion resistance. HCEP additionally increases the transformer's weatherability and offers better performance in heavily polluted environments.

The core is built with high permeability grain oriented silicon steel laminations for low losses. The windings are copper wire with copper plate double isolation. The concentric distribution of the coils prevents magnetic flux leakage, achieving greater accuracy and higher capacity to withstand mechanical stresses in adverse operating conditions.

Partial Discharge measurements exceed the IEEE, CAN/CSA and IEC requirements.

**Mechanical characteristics**

Insulation Material	Colors	Weight (lbs.)	Creepage distance (in)	Strike distance (in)
Resin	Gray*	99	33.46	10.63



Drawing number:  
Fused: 4286574 | Unfused: 4286824

	PRIMARY TERMINAL	GROUND TERMINAL	SECONDARY TERMINAL
CONNECTIONS			
	Type: TE-4T Material: Copper Range: 8SOL-4TRE	Type: TE-12-250 Material: Copper Range: 4TRE-250MCM	Type: Quick Connector Material: Brass

	SINGLE SECONDARY	
MARKING (Single Primary Ratio)		
	FUSED	UNFUSED

Approximate dimensions in inches (mm).  
\* Brown color available upon request.

# VRJ-24

## 25 kV VOLTAGE TRANSFORMER

Electrical characteristics												
Code (CEP)	Code (HCEP)	Ratio	Primary (V)	Secondary (V)	IEEE Metering Accuracy	Continuous Rated Voltage Factor (Un)	Rated Voltage Factor 30 s (Un)	Thermal Burden (VA)	Nominal Voltage System (kV)	BIL (kV)	Power-Frequency Withstand Voltage (1 min)	
											Primary & Secondary (kV <sub>rms</sub> )	Secondary Winding (kV <sub>rms</sub> )
<b>With FUSE in the secondary box</b>												
757141060	757140010-H	60:1	7200/12470Y	120	0.3 W,X,M,Y	1.1	1.25	1000	25	150	50	2.5
757141100	757140011-H	100:1	12000/20780Y	120	0.3 W,X,M,Y	1.1	1.25	1000	25	150	50	2.5
757149100	757140020-H	100:1	12000/20780Y	120	0.15 W,X	1.1	1.25	1000	25	150	50	2.5
757141110	757140012-H	110:1	13200/22860Y	120	0.3 W,X,M,Y	1.1	1.25	1000	25	150	50	2.5
757149110	757140021-H	110:1	13200/22860Y	120	0.15 W,X	1.1	1.25	1000	25	150	50	2.5
757141120	757140013-H	120:1	14400/24940Y	120	0.3 W,X,M,Y	1.1	1.25	1000	25	150	50	2.5
757149120	757140022-H	120:1	14400/24250Y	120	0.15 W,X	1.1	1.25	1000	25	150	50	2.5
757141150	757140014-H	150:1	18000/18000Y	120	0.3 W,X,M,Y	1.1	1.25	1000	25	150	50	2.5
757149150	757140023-H	150:1	18000/18000Y	120	0.15 W,X	1.1	1.25	1000	25	150	50	2.5
757141200	757140015-H	200:1	24000/24000Y	120	0.3 W,X,M,Y	1.1	1.25	1000	25	150	50	2.5
757149200	757140024-H	200:1	24000/24000Y	120	0.15 W,X	1.1	1.25	1000	25	150	50	2.5
<b>Without FUSE in the secondary box</b>												
757140060	757140000-H	60:1	7200/12470Y	120	0.3 W,X,M,Y	1.1	1.25	1000	25	150	50	2.5
757140100	757140001-H	100:1	12000/20780Y	120	0.3 W,X,M,Y	1.1	1.25	1000	25	150	50	2.5
757140110	757140002-H	110:1	13200/22860Y	120	0.3 W,X,M,Y	1.1	1.25	1000	25	150	50	2.5
757140120	757140003-H	120:1	14400/24940Y	120	0.3 W,X,M,Y	1.1	1.25	1000	25	150	50	2.5
757140150	757140004-H	150:1	18000/18000Y	120	0.3 W,X,M,Y	1.1	1.25	1000	25	150	50	2.5
757140200	757140005-H	200:1	24000/24000Y	120	0.3 W,X,M,Y	1.1	1.25	1000	25	150	50	2.5

Additional ratings available upon request.

Notes: .....

.....

.....

.....

.....

.....

.....

.....

.....

.....

.....

.....