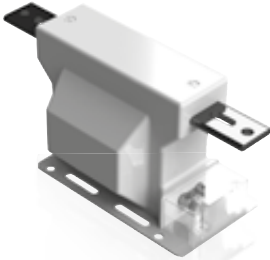


CID-7

5 kV CURRENT TRANSFORMER

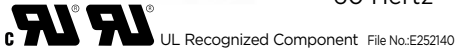


ARTECHE AC/CID Series are dry type indoor service current transformers. The core is encapsulated with Type B epoxy resin which provides excellent internal dielectric properties and mechanical strength, ensuring a long mechanical and electrical life. The transformer is maintenance free.

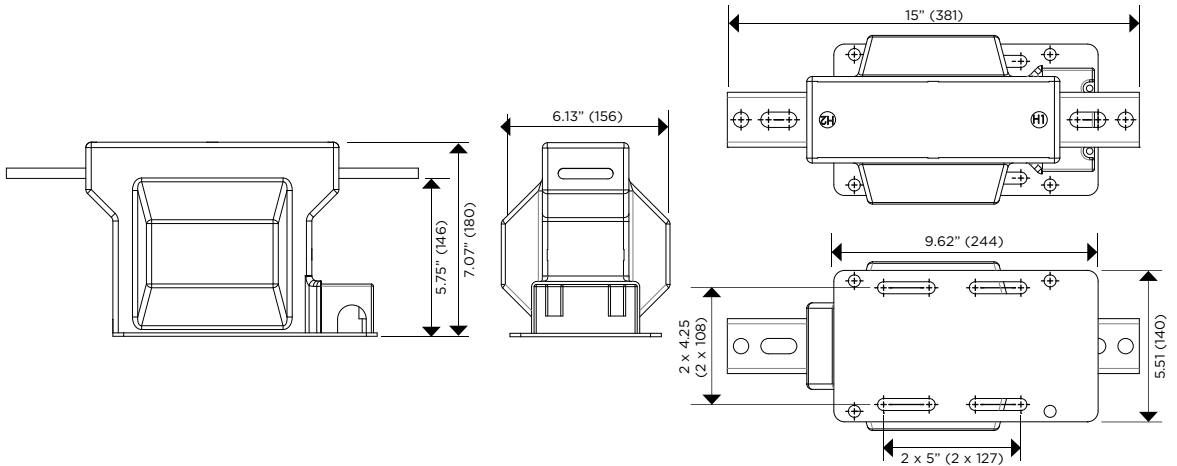
The core is built with high permeability grain oriented silicon steel laminations for low losses. The windings are copper wire with copper plate double isolation. The concentric distribution of the coils prevents magnetic flux leakage, achieving greater accuracy and higher capacity to withstand mechanical stresses in adverse operating conditions.

Partial discharge measurements exceed IEEE C57.13 2008 requirements.

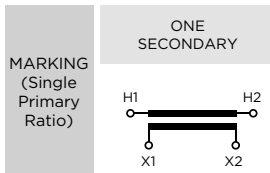
INDOOR
60 Hertz



Mechanical characteristics		
Insulation Material	Colors	Weight (lbs.)
Resin	Gray *	38



Drawing number: 4287524



Approximate dimensions in inches (mm).
* Brown color available upon request.

CID-7

5 kV CURRENT TRANSFORMER

Electrical characteristics

Code	Current Ratio (Primary: Secondary) (A)	Continuous Thermal Current Rating Factor @ 30°C	Short- time Thermal Current (kA/1s)	Short- time Mechanical Current (kA _{peak})	IEEE Metering Accuracy	Relay Accuracy	Highest Nominal Voltage System (kV)	BIL (kV)	Power-Frequency Withstand Voltage (1 min)	
									Primary & Secondary (kV _{rms})	Secondary Winding (kV _{rms})
750951001	5:5	1.5	0.5	1.35	0.3 B1.8	T-100	5	60	19	2.5
750951002	10:5	1.5	1	2.7	0.3 B1.8	T-100	5	60	19	2.5
750951003	15:5	1.5	1.5	4.05	0.3 B1.8	T-100	5	60	19	2.5
750951004	20:5	1.5	2	5.4	0.3 B1.8	T-100	5	60	19	2.5
750951005	25:5	1.5	2.5	6.75	0.3 B1.8	T-100	5	60	19	2.5
750951006	30:5	1.5	3	8.1	0.3 B1.8	T-100	5	60	19	2.5
750951008	40:5	1.5	4	10.8	0.3 B1.8	T-100	5	60	19	2.5
750951010	50:5	1.5	5	13.5	0.3 B1.8	T-100	5	60	19	2.5
750951015	75:5	1.5	7.5	20.25	0.3 B1.8	T-100	5	60	19	2.5
750951020	100:5	1.5	10	27	0.3 B1.8	T-100	5	60	19	2.5
750951030	150:5	1.5	15	40.5	0.3 B1.8	T-100	5	60	19	2.5
750951040	200:5	1.5	20	54	0.3 B1.8	T-100	5	60	19	2.5
750951060	300:5	1.5	30	81	0.3 B1.8	T-100	5	60	19	2.5
750951080	400:5	1.5	40	108	0.3 B1.8	T-100	5	60	19	2.5
750951120	600:5	1.5	60	162	0.3 B1.8	T-100	5	60	19	2.5
750951160	800:5	1.5	80	216	0.3 B1.8	T-100	5	60	19	2.5
750951200	1000:5	1.5	100	270	0.3 B1.8	T-100	5	60	19	2.5
750951240	1200:5	1.5	120	324	0.3 B1.8	T-100	5	60	19	2.5

Additional ratings available upon request.

Notes:

.....

.....

.....

.....

.....

.....

.....

.....

.....

.....

.....

.....

.....

.....

.....

.....

.....

.....

.....