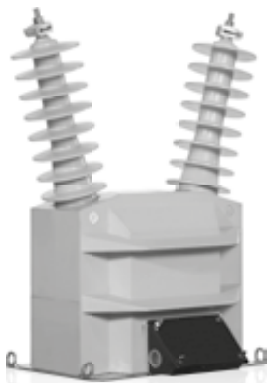


VRS-36

34.5 kV VOLTAGE TRANSFORMER



**OUTDOOR
60 Hertz**

ARTECHE UR/VR series are dry type outdoor service voltage transformers. The core is encapsulated with Type B epoxy resin which provides excellent internal dielectric properties and mechanical strength. The external layer of Cycloaliphatic Epoxy Resin (CEP) provides resistance to ultraviolet rays and the effects of tracking and erosion on the exterior of the transformer ensuring a long mechanical and electrical life. The transformer is maintenance free.

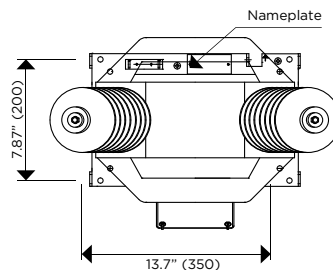
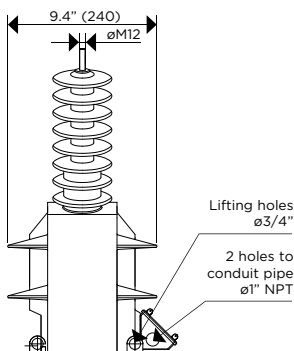
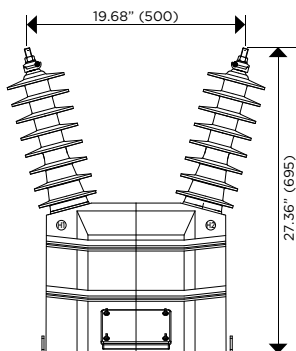
The external layer can be manufactured with Hydrophobic Cycloaliphatic Epoxy Resin (HCEP) which improves service life expectancy due to its improved tracking and erosion resistance. HCEP additionally increases the transformer's weatherability and offers better performance in heavily polluted environments.

The core is built with high permeability grain oriented silicon steel laminations for low losses. The windings are copper wire with copper plate double isolation. The concentric distribution of the coils prevents magnetic flux leakage, achieving greater accuracy and higher capacity to withstand mechanical stresses in adverse operating conditions.

Partial Discharge measurements exceed the IEEE, CAN/CSA and IEC requirements.

Mechanical characteristics

Insulation Material	Colors	Weight (lbs.)	Creepage distance (in)	Strike distance (in)
Resin	Gray*	183	49.2	183



Drawing number:
Fused: 4286579 | Unfused: 4286825

	PRIMARY TERMINAL	GROUND TERMINAL	SECONDARY TERMINAL
CONNECTIONS	<p>Type: TE-4T Material: Copper Range: 8SOL-4TRE</p>	<p>Type: TE-12-250 Material: Copper Range: 4TRE-250MCM</p>	<p>Type: Quick Connector Material: Brass</p>

	SINGLE SECONDARY	ONE SECONDARY WITH TAP
MARKING (Single Primary Ratio)	<p>Fuse: 16A</p>	<p>Fuse: 16A</p>
	FUSED	FUSED
	UNFUSED	UNFUSED

Approximate dimensions in inches (mm).
* Brown color available upon request.

VRS-36

34.5 kV VOLTAGE TRANSFORMER

Electrical characteristics

Code (CEP)	Code (HCEP)	Ratio	Primary (V)	Secondary (V)	IEEE Metering Accuracy	Continuous Rated Voltage Factor (Un)	Rated Voltage Factor 30 s (Un)	Thermal Burden (VA)	Nominal Voltage System (kV)	BIL (kV)	Power-Frequency Withstand Voltage (1 min)	
											Primary & Secondary (kV _{rms})	Secondary Winding (kV _{rms})
With FUSE in the secondary box												
757923166	757920020-H	69.25 / 166:1	8310/14393Y & 19920/34500Y	120	0.3 W,X,M,Y	1.1	1.25	1000	34.5	200	70	2.5
757921140	757920010-H	140:1	16800/29098Y	120	0.3 W,X,M,Y	1.1	1.25	1000	34.5	200	70	2.5
757923240	757920021-H	140/240:1	16100/27886Y	115/67.08	0.3 W,X,M,Y	1.1	1.25	1000	34.5	200	70	2.5
757921166	757920011-H	166:1	19920/34500Y	120	0.3 W,X,M,Y	1.1	1.25	1000	34.5	200	70	2.5
757921175	757920012-H	175:1	20125/34857Y	115	0.3 W,X,M,Y	1.1	1.25	1000	34.5	200	70	2.5
757923300	757920022-H	175/300:1	20125/34857Y	115/67.08	0.3 W,X,M,Y	1.1	1.25	1000	34.5	200	70	2.5
757921220	757920013-H	220:1	26400/26400Y	120	0.3 W,X,M,Y,Z	1.1	1.25	1000	34.5	200	70	2.5
757923400	757920023-H	240/400:1	27600/27600Y	115 / 69	0.3 W,X,M,Y	1.1	1.25	1000	34.5	200	70	2.5
757921300	757920014-H	300:1	34500/34500Y	115	0.3 W,X,M,Y,Z	1.1	1.25	1000	34.5	200	70	2.5
757923500	757920024-H	300/500:1	34500/34500Y	115/69	0.3 W,X,M,Y	1.1	1.25	1000	34.5	200	70	2.5
757929140	757920040-H	140:1	16800/29098Y	120	0.15 W,X	1.1	1.25	1000	34.5	200	70	2.5
757929166	757920041-H	166:1	19920/34500Y	120	0.15 W,X	1.1	1.25	1000	34.5	200	70	2.5
757929175	757920042-H	175:1	20125/34500Y	115	0.15 W,X	1.1	1.25	1000	34.5	200	70	2.5
757929200	757920043-H	220:1	26400/26400Y	120	0.15 W,X	1.1	1.25	1000	34.5	200	70	2.5
757929300	757920044-H	300:1	34500/34500Y	115	0.15 W,X	1.1	1.25	1000	34.5	200	70	2.5
Without FUSE in the secondary box												
757928166	757920030-H	69.25 / 166:1	8310/14393Y & 19920/34500Y	120	0.3 W,X,M,Y	1.1	1.25	1000	34.5	200	70	2.5
757920140	757920000-H	140:1	16800/29098Y	120	0.3 W,X,M,Y	1.1	1.25	1000	34.5	200	70	2.5
757928240	757920031-H	140/240:1	16100/27886Y	115/67.08	0.3 W,X,M,Y	1.1	1.25	1000	34.5	200	70	2.5
757920166	757920001-H	166:1	19920/34500Y	120	0.3 W,X,M,Y	1.1	1.25	1000	34.5	200	70	2.5
757920175	757920002-H	175:1	20125/34857Y	115	0.3 W,X,M,Y	1.1	1.25	1000	34.5	200	70	2.5
757928300	757920032-H	175/300:1	20125/34857Y	115/67.08	0.3 W,X,M,Y	1.1	1.25	1000	34.5	200	70	2.5
757920220	757920003-H	220:1	26400/26400Y	120	0.3 W,X,M,Y,Z	1.1	1.25	1000	34.5	200	70	2.5
757928400	757920033-H	240/400:1	27600/27600Y	115 / 69	0.3 W,X,M,Y	1.1	1.25	1000	34.5	200	70	2.5
757920300	757920004-H	300:1	34500/34500Y	115	0.3 W,X,M,Y,Z	1.1	1.25	1000	34.5	200	70	2.5
757928500	757920034-H	300/500:1	34500/34500Y	115/69	0.3 W,X,M,Y	1.1	1.25	1000	34.5	200	70	2.5

Additional ratings available upon request.

Notes:

.....

.....

.....

.....

.....

.....

.....