

CRF-24

25 kV CURRENT TRANSFORMER



**OUTDOOR
60 Hertz**

ARTECHE CR series are dry type outdoor service current transformers. The core is encapsulated with Type B epoxy resin which provides excellent internal dielectric properties and mechanical strength. The external layer of Cycloaliphatic Epoxy Resin (CEP) provides resistance to ultraviolet rays and the effects of tracking and erosion on the exterior of the transformer ensuring a long mechanical and electrical life. The transformer is maintenance free.

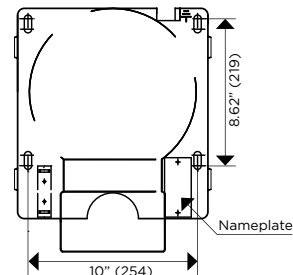
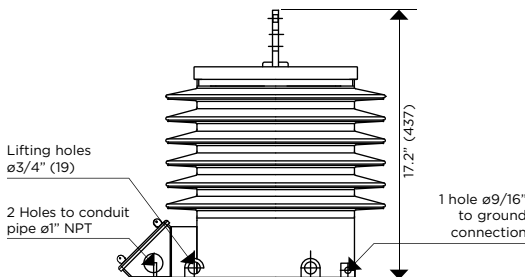
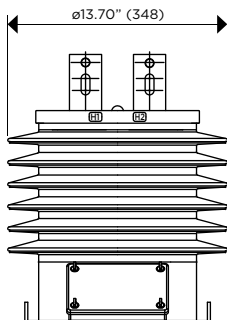
The external layer can be manufactured with Hydrophobic Cycloaliphatic Epoxy Resin (HCEP) which improves service life expectancy due to its improved tracking and erosion resistance. HCEP additionally increases the transformer's weatherability and offers better performance in heavily polluted environments.

The core is built with high permeability grain oriented silicon steel laminations for low losses. The windings are copper wire with copper plate double isolation. The concentric distribution of the coils prevents magnetic flux leakage, achieving greater accuracy and higher capacity to withstand mechanical stresses in adverse operating conditions.

Partial Discharge measurements exceed the IEEE, CAN/CSA and IEC requirements.

Mechanical characteristics

Insulation Material	Colors	Weight (lbs.)	Creepage distance (in)	Strike distance (in)
Resin	Gray*	112.4	27.55	12



Drawing number: 9448131/4287311**

	PRIMARY TERMINAL	GROUND CONNECTOR	SECONDARY TERMINAL		ONE SECONDARY
CONNECTIONS					
	Type: NEMA-2 Material: Copper	Type: NEMA-4 Material: Copper **	Type: TE-12-250 Material: Copper Range: 4TRE-250MCM		Type: Quick Connector Material: Brass
MARKING (Single Primary Ratio)					

NEMA 2 THICKNESS	3/8"	1/2"	3/4"
AMPERES	0 TO 1200	1201 TO 1500	1501 TO 2000

Approximate dimensions in inches (mm).
* Brown color available upon request.

CRF-24

25 kV CURRENT TRANSFORMER

Electrical characteristics

Code (CEP)	Code (HCEP)	Current Ratio (Primary: Secondary) (A)	Continuous Thermal Current Rating Factor @ 30°C	Short-time Thermal Current (kA/1s)	Short-time Mechanical Current (kA _{peak})	IEEE Metering Accuracy	Relay Accuracy	Nominal Voltage System (kV)	BIL (kV)	Power-Frequency Withstand Voltage (1 min)	
										Primary & Secondary (kV _{rms})	Secondary Winding (kV _{rms})
756261001	756260000-H	5:5	1.5	0.5	0.95	0.3B-1.8	T200	25	150	50	2.5
756261002	756260001-H	10:5	1.5	1	1.9	0.3B-1.8	T200	25	150	50	2.5
756261003	756260002-H	15:5	1.5	1.5	2.85	0.3B-1.8	T200	25	150	50	2.5
756261004	756260003-H	20:5	1.5	2	3.8	0.3B-1.8	T200	25	150	50	2.5
756261005	756260004-H	25:5	1.5	2.5	4.75	0.3B-1.8	T200	25	150	50	2.5
756261006	756260005-H	30:5	1.5	3	5.7	0.3B-1.8	T200	25	150	50	2.5
756261008	756260006-H	40:5	1.5	4	7.6	0.3B-1.8	T200	25	150	50	2.5
756261010	756260007-H	50:5	1.5	5	9.5	0.3B-1.8	T200	25	150	50	2.5
756261012	756260008-H	60:5	1.5	6	11.4	0.3B-1.8	T200	25	150	50	2.5
756261015	756260009-H	75:5	1.5	7.5	14.25	0.3B-1.8	T200	25	150	50	2.5
756261020	756260010-H	100:5	1.5	10	19	0.3B-1.8	T200	25	150	50	2.5
756261030	756260011-H	150:5	1.5	15	37.5	0.3B-1.8	T200	25	150	50	2.5
756261040	756260012-H	200:5	1.5	20	50	0.3B-1.8	T200	25	150	50	2.5
756261060	756260013-H	300:5	1.5	30	75	0.3B-1.8	T200	25	150	50	2.5
756261080	756260014-H	400:5	1.5	40	100	0.3B-1.8	T200	25	150	50	2.5
756261120	756260015-H	600:5	1.5	60	86.7	0.3B-1.8	T200	25	150	50	2.5
756261160	756260016-H	800:5	1.2	60	114	0.3B-1.8	T200	25	150	50	2.5
756261200	756260017-H	1000:5	1.0	75	142.5	0.3B-1.8	T200	25	150	50	2.5
756261240	756260018-H	1200:5	1.0	90	171	0.3B-1.8	T200	25	150	50	2.5
756262001	756260030-H	5/10:5	2.0/1.5	1	1.9	0.3B-0.9/0.3B-1.8	T100/200	25	150	50	2.5
756262002	756260031-H	10/20:5	2.0/1.5	2	3.8	0.3B-0.9/0.3B-1.8	T100/200	25	150	50	2.5
756262005	756260032-H	25/50:5	2.0/1.5	5	9.5	0.3B-0.9/0.3B-1.8	T100/200	25	150	50	2.5
756262006	756260033-H	30/60:5	2.0/1.5	6	11.4	0.3B-0.9/0.3B-1.8	T100/200	25	150	50	2.5
756262010	756260034-H	50/100:5	2.0/1.5	10	19	0.3B-0.9/0.3B-1.8	T100/200	25	150	50	2.5
756262015	756260035-H	75/150:5	2.0/1.5	15	28.5	0.3B-0.9/0.3B-1.8	T100/200	25	150	50	2.5
756262020	756260036-H	100/200:5	2.0/1.5	20	38	0.3B-0.9/0.3B-1.8	T100/200	25	150	50	2.5
756262030	756260037-H	150/300:5	2.0/1.5	30	57	0.3B-0.9/0.3B-1.8	T100/200	25	150	50	2.5
756262040	756260038-H	200/400:5	2.0/1.5	40	76	0.3B-0.9/0.3B-1.8	T100/200	25	150	50	2.5
756262060	756260039-H	300/600:5	2.0/1.5	60	86.7	0.3B-0.9/0.3B-1.8	T100/200	25	150	50	2.5
756262080	756260040-H	400/800:5	1.2/1.2	60	114	0.3B-0.9/0.3B-1.8	T100/200	25	150	50	2.5
756262100	756260041-H	500/1000:5	1.0/1.0	75	142.5	0.3B-0.9/0.3B-1.8	T100/200	25	150	50	2.5
756262120	756260042-H	600/1200:5	1.0/1.0	90	171	0.3B-0.9/0.3B-1.8	T100/200	25	150	50	2.5
756269001	756260060-H	5:5	1.5	0.5	0.95	0.15B-0.9	-	25	150	50	2.5
756269002	756260061-H	10:5	1.5	1	1.9	0.15B-0.9	-	25	150	50	2.5
756269010	756260062-H	50:5	1.5	5	9.5	0.15B-0.9	-	25	150	50	2.5
756269015	756260063-H	75:5	1.5	7.5	14.25	0.15B-0.9	-	25	150	50	2.5
756269020	756260064-H	100:5	1.5	10	19	0.15B-0.9	-	25	150	50	2.5
756269120	756260065-H	600:5	1.5	10	19	0.15B-0.9	-	25	150	50	2.5
756269160	756260066-H	800:5	1.2	60	86.7	0.15B-0.9	-	25	150	50	2.5
756269200	756260067-H	1000:5	1.0	60	114	0.15B-0.9	-	25	150	50	2.5
756269240	756260068-H	1200:5	1.0	90	171	0.15B-0.9	-	25	150	50	2.5
756268001	756260090-H	5/10:5	2.0/1.5	1	1.9	0.15B-0.5/B-0.9	-	25	150	50	2.5
756268002	756260091-H	10/20:5	2.0/1.5	2	3.8	0.15B-0.5/B-0.9	-	25	150	50	2.5
756268060	756260092-H	300/600:5	2.0/1.5	60	86.7	0.15B-0.5/B-0.9	-	25	150	50	2.5
756268080	756260093-H	400/800:5	1.2/1.2	60	114	0.15B-0.5/B-0.9	-	25	150	50	2.5
756268100	756260094-H	500/1000:5	1.0/1.0	75	142.5	0.15B-0.5/B-0.9	-	25	150	50	2.5
756268120	756260095-H	600/1200:5	1.0/1.0	90	171	0.15B-0.5/B-0.9	-	25	150	50	2.5

CRF-24

25 kV CURRENT TRANSFORMER

Electrical characteristics

Code (CEP)	Code (HCEP)	Current Ratio (Primary: Secondary) (A)	Continuous Thermal Current Rating Factor @ 30°C	Short-time Thermal Current (kA/1s)	Short-time Mechanical Current (kA _{peak})	IEEE Metering Accuracy	Relay Accuracy	Nominal Voltage System (kV)	BIL (kV)	Power-Frequency Withstand Voltage (1 min)	
										Primary & Secondary (kV _{rms})	Secondary Winding (kV _{rms})
High Accuracy Extended Range 5% nominal current to Rating Factor											
756267001	756260120-H	5:5	2.0	0.5	0.95	0.15S B-0.5	-	25	150	50	2.5
756267002	756260121-H	10:5	2.0	1	1.9	0.15S B-0.5	-	25	150	50	2.5
756267010	756260122-H	50:5	2.0	5	9.5	0.15S B-0.5	-	25	150	50	2.5
756267015	756260123-H	75:5	2.0	7.5	14.25	0.15S B-0.5	-	25	150	50	2.5
756267020	756260124-H	100:5	2.0	10	19	0.15S B-0.5	-	25	150	50	2.5
756267120	756260125-H	600:5	2.0	10	19	0.15S B-0.5	-	25	150	50	2.5
756267160	756260126-H	800:5	1.5	60	86.7	0.15S B-0.9	-	25	150	50	2.5
756267200	756260127-H	1000:5	1.2	60	114	0.15S B-0.9	-	25	150	50	2.5
756267240	756260128-H	1200:5	1.2	90	171	0.15S B-0.9	-	25	150	50	2.5
High Accuracy Extended Range 1% nominal current to Rating Factor											
756266040	756260150-H	200:5	4.0	10	19	0.15 B-1.8	-	25	150	50	2.5
756266120	756260151-H	600:5	3.0	10	19	0.15 B-1.8	-	25	150	50	2.5
756266200	756260152-H	1000:5	2.0	60	114	0.15 B-1.8	-	25	150	50	2.5
756266240	756260153-H	1200:5	1.5	90	171	0.15 B-1.8	-	25	150	50	2.5

Additional ratings available upon request.

