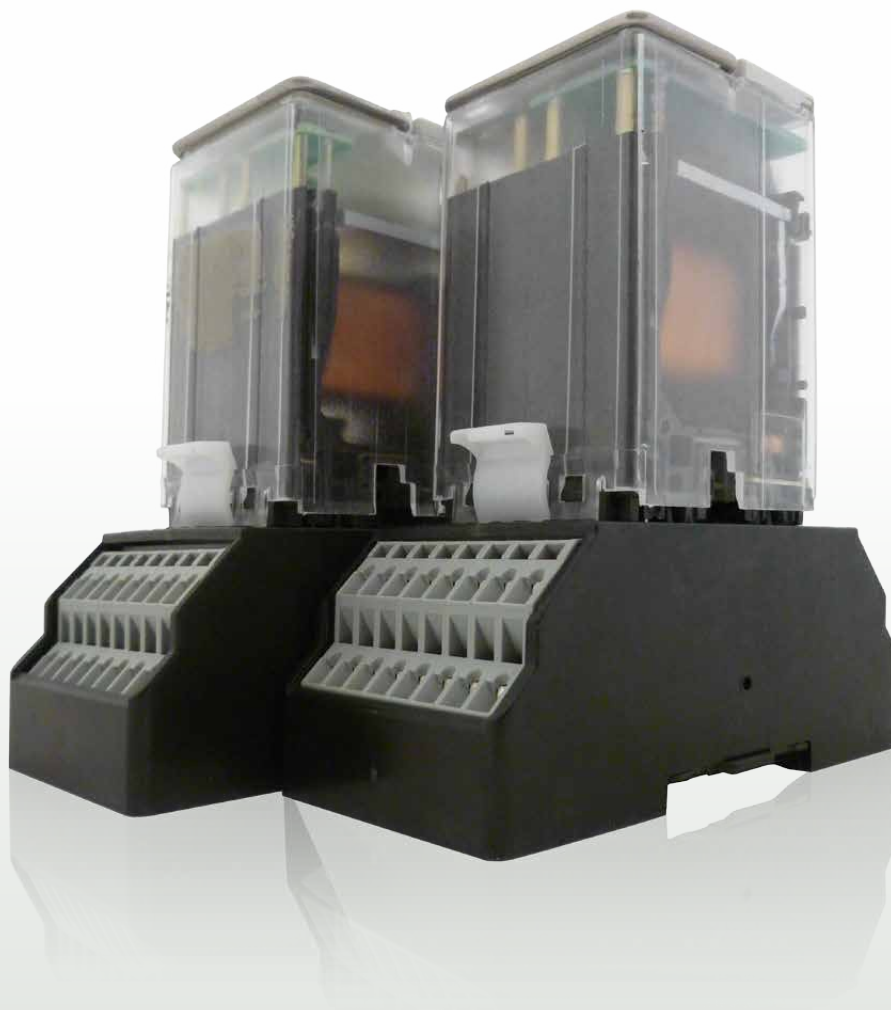


arteche

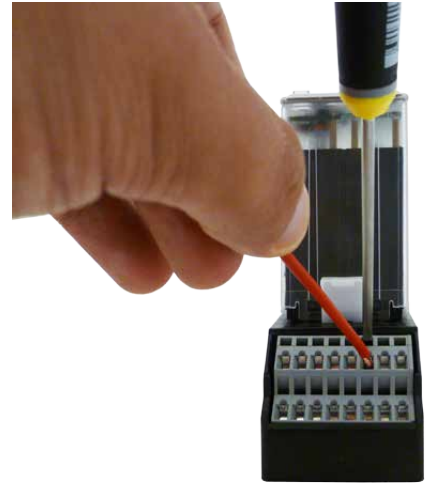


Front Connection Spring
Type Socket

The Front Connection Spring Type Sockets by Arteche are a solution for the railway industry, the best accessories for our full range of 4 contact relays in terms of reliability and endurance.

Main features

- › Easy and fast to connect by the user.
- › Safer connection.
- › Reduced wiring time.
- › Reduced replacement time.
- › Maintenance-free.
- › Keeps reliability of all the components.
- › Wide range of use in different temperature or damp conditions.



Tests and standards

Electrical Tests

Dielectric strength	IEC 60255-27	2kV 50Hz 1min
Surge withstand	IEC 60255-27	5 Kv 0,5 J 1,2/50 s
Insulation	IEC 60255-27	500Vcc >100MΩ

Environmental Test

Thermal shock	IEC 60068-2	+70°C / -25°C / 5 cycles of 3h+3h.
Damp heat	IEC 60068-2	40°C / 93%Hr / 4 days
Temperature rise at rated voltage	EN 61810-7	55°C / 10A / 3h

Mechanical Test

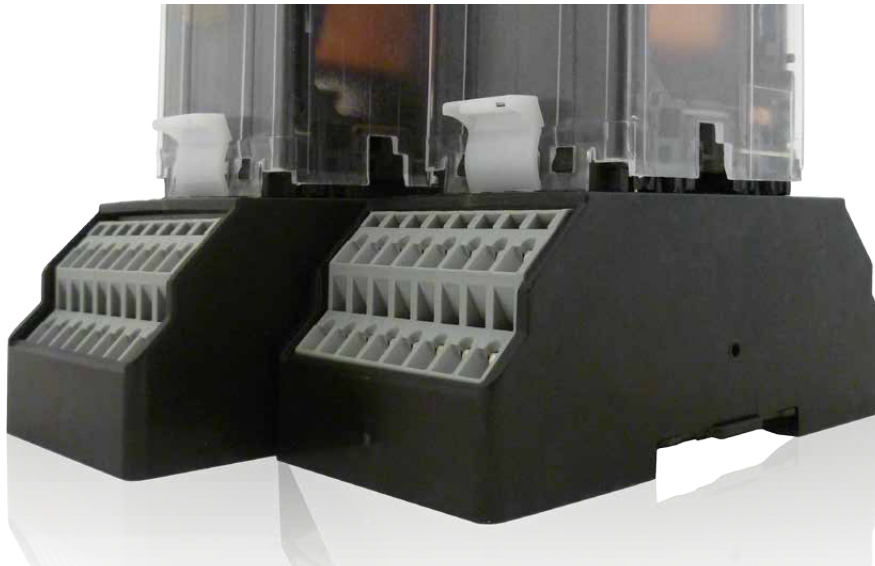
Sinusoidal vibrations	EN 60068-2-6	Fc
Shock	EN 60068-2-27	Ea, 5Hz - 8 Hz: 3,5mm amplitude. 8Hz - 150 Hz: 1g.
Bump test	EN 60068-2-29	Eb, 15 g / 11 ms.
Seismic qualifications	IEEE 344-2004, IEEE C37.98-1987	ZPA 5
Free fall test	EN 60068-2-32	Procedure 1, 1000mm / 2 falls from each X, Y y Z

Ingress Protection

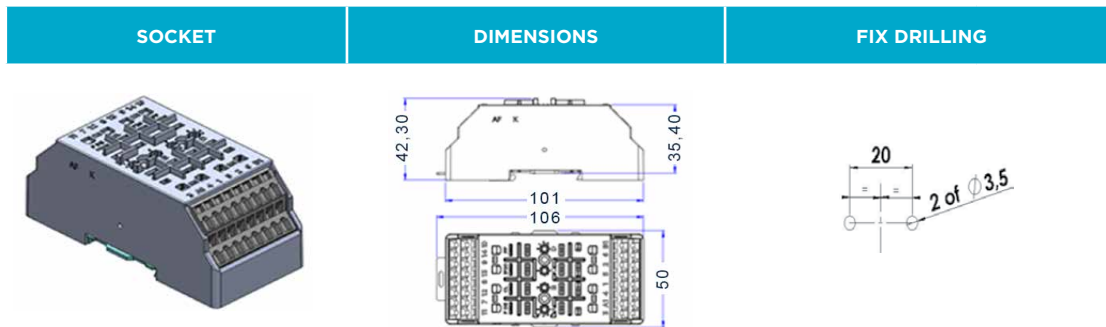
IP20 Protection

Compatible relays:

- › RF OP
- › TDF OP
- › VDF10 OP
- › BF
- › CF
- › RBF







Dimensions



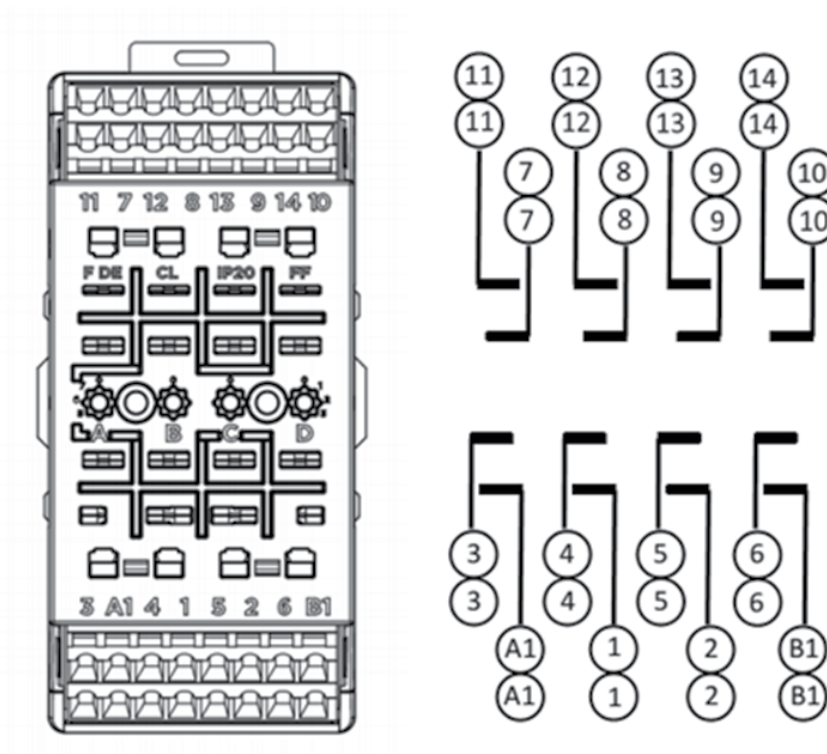
F DE CL IP20

Terminal

TYPE		MAX. WIRE SECTION.	QUANTITY
RIGID (Stripped wire length: 5 - 6mm)		0,08 - 2,5mm ²	1+1
FLEXIBLE (Stripped wire length: 5 - 6mm)		0,08 - 2,5mm ²	1+1
TIP ISOLATE TERMINAL		0,25 - 1,5mm ²	1+1
TIP WITHOUT ISOLATE TERMINAL		0,25 - 2,5mm ²	1+1

(Flat screwdriver 0,4 x 3,5mm maximum)

Wiring diagram



› 2 holes on the terminal block for each connection



arteche
Moving together



ARTECHE_FY_Spring_EN

Version: 1.1

©ARTECHE