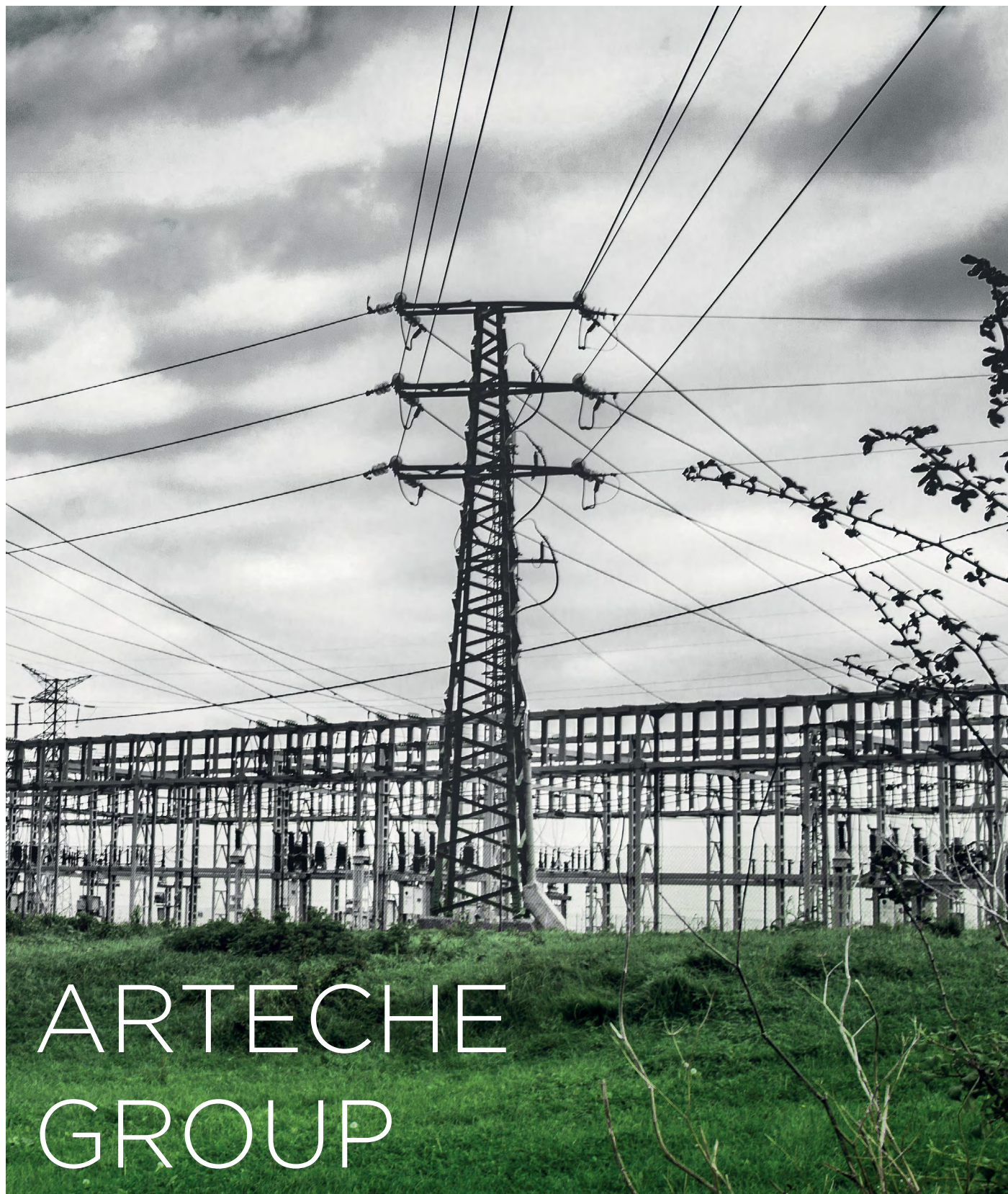


arteche



ARTECHE
GROUP

PERMANENTLY EVOLVING

THE PRODUCTS AND SOLUTIONS DEVELOPED BY ARTECHE MAKE US A LEADING COMPANY, WITH PARTICIPATION IN FLAGSHIP PROJECTS FOR THE ELECTRICAL SECTOR.

Across the world with very local solutions

ARTECHE is a global organization that has manufacturing, technical and trade facilities worldwide, and has products installed in more than 150 countries around the world.

This allows ARTECHE to directly meet the local needs of the electricity sector, its demands and complexities. An understanding that has been structured into a dynamic organization ready to drive forward its growth both geographically and technologically with current and future business opportunities.

In short, a global, strong and stable brand prepared to respond to any market changes through our prime directive: drive forward with our customers. [MOVING TOGETHER.](#)

To this end, we have an international team with the talent and commitment needed to provide excellence in both quality and service. This allows us to work on the basis of continuous innovation, adapting to the different needs of each client and, therefore, establishing close relations with them.

A way of behaving that makes ARTECHE an organization that is well aware of tomorrow's challenges, and, today, is internationally recognized for its strength, knowledge, experience and projection.

ARTECHE SOLUTIONS

HV and MV instrument transformers

- › High Voltage instrument transformers up to 800 kV.
- › Power Voltage Transformers for auxiliary services.
- › Medium voltage instrument transformers.
- › Combined Transformers & Metering Units.

Digital measurement

- › Optical Current transformers.
- › Stand Alone Merging Units.
- › Cable fault detection system to protect mixed HV lines based on passive optical transformer.

Low power instrument transformers and sensors

- › Low power voltage and current transformers according to IEC 61869.
- › Combined Low power instrument transformers and PLC/BPL couplers.

Power grid automation systems

- › Substation automation systems.
- › Substation grade metering and control devices.
- › Distribution automation IEDs.
- › PV power plant control systems.

Electro-mechanical relays and test blocks

- › Auxiliary, trip and supervision relays for HV/ MV power systems and demanding substation environments.
- › Relays for railway industry according EN-50155 and other railway demanding standards.
- › Test blocks.

Medium Voltage reclosers

- › Three-phase reclosers.
- › Vacuum technology.
- › Substation or pole mount.
- › According ANSI C37.60, IEC 62271-111, IEC 61000-4 and IEC 60255.

Power Quality

- › Power Quality consultancy and engineering services.
- › Power factor correction.
- › Voltage regulation.
- › Grid code compliance.
- › Capacitor banks and harmonic filters.

Specialized and value added services

- › Power system assessment.
- › System stability studies.
- › Ferro resonance studies.
- › Short short circuit analysis.
- › Lifecycle services.
- › Diagnosis and monitoring of instrument transformer.



Transforming power into value

World leader in instrument transformers with a complete range up to 800 kV and references installed in more than 150 countries



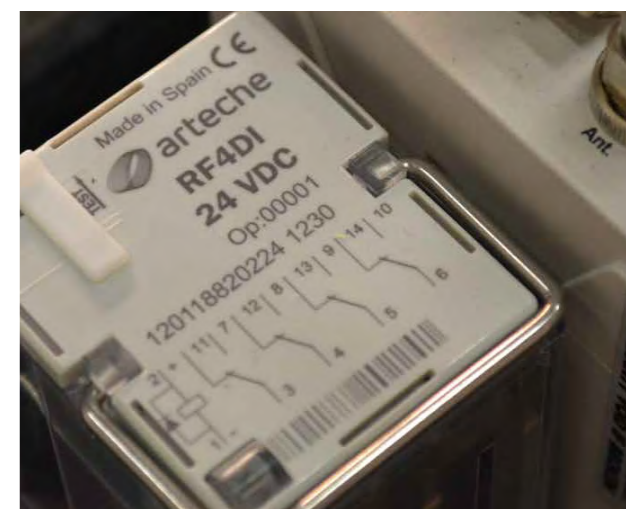
When reliability and safety matters

Our relays, equipment and intelligent devices are the right choice when reliability, security and performance are not optional

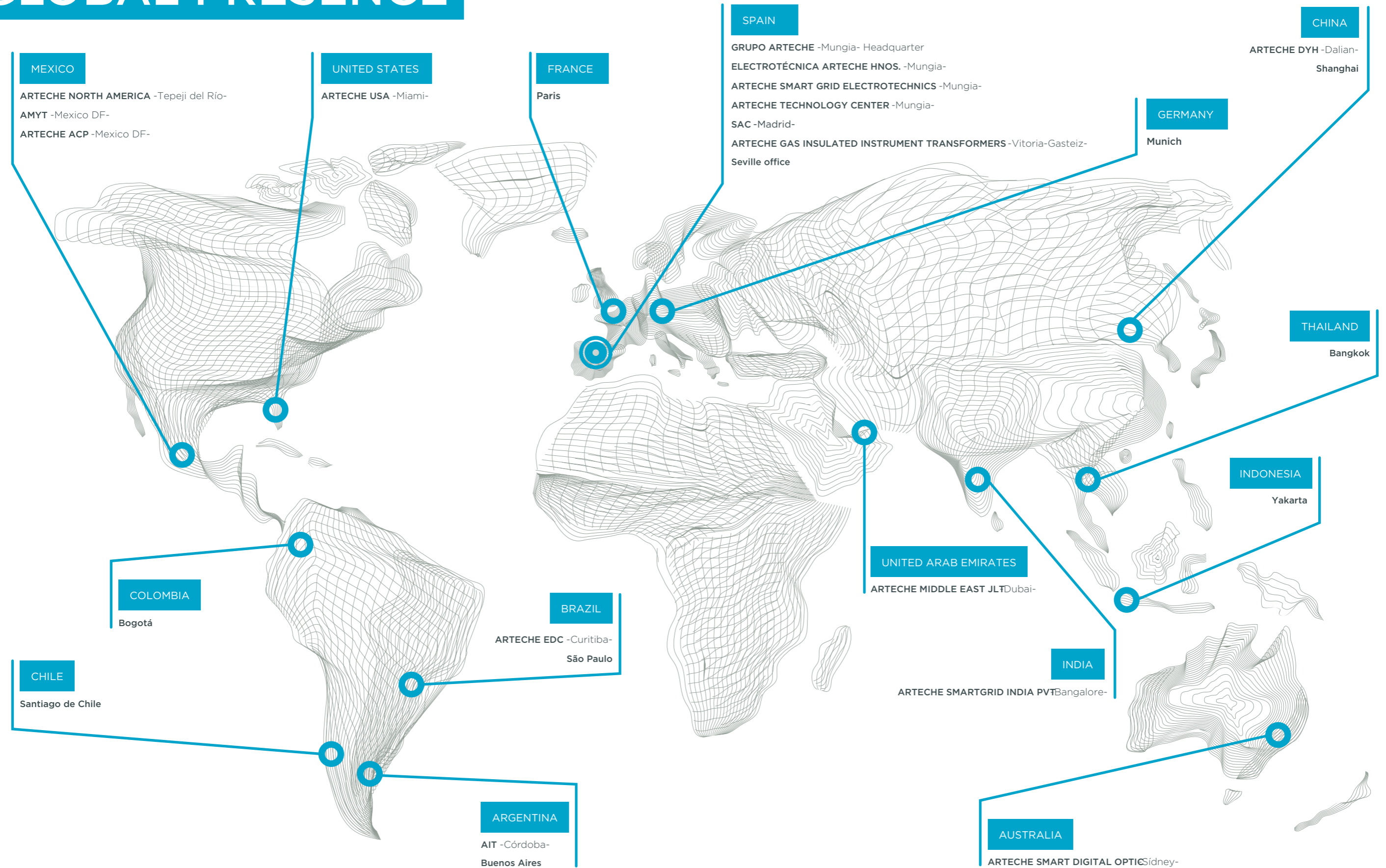


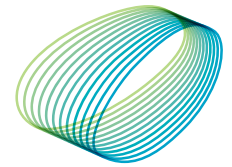
Expertise, knowledge and commitment for a clean and efficient future

After +25 years solving power quality issues, today we are enabling seamless renewables grid integration



GLOBAL PRESENCE





arteche
Moving together

- _ Closeness and service are the hallmark of the ARTECHE.
- _ A know-how built for more than 70 years in the international electricity sector to offer the solutions of the future.
- _ Present in over 150 countries.
- _ Efficient and flexible organization enabling quick decisions.
- _ Solutions for power generation, transmission, distribution and industry.