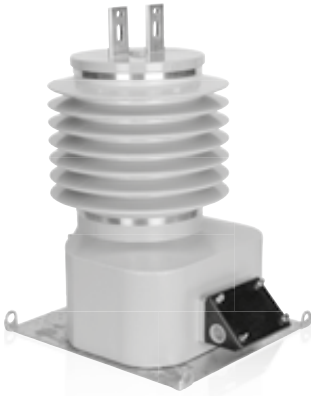


# KM-25

## 25 kV COMBINED TRANSFORMER



OUTDOOR  
60 Hertz

ARTECHE KM series are dry type outdoor service combination CT-PT. The core is encapsulated with Type B epoxy resin which provides excellent internal dielectric properties and mechanical strength. The external layer of Cycloaliphatic Epoxy Resin (CEP) provides resistance to ultraviolet rays and the effects of tracking and erosion on the exterior of the transformer ensuring a long mechanical and electrical life. The transformer is maintenance free.

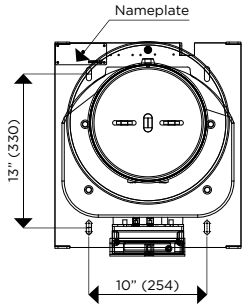
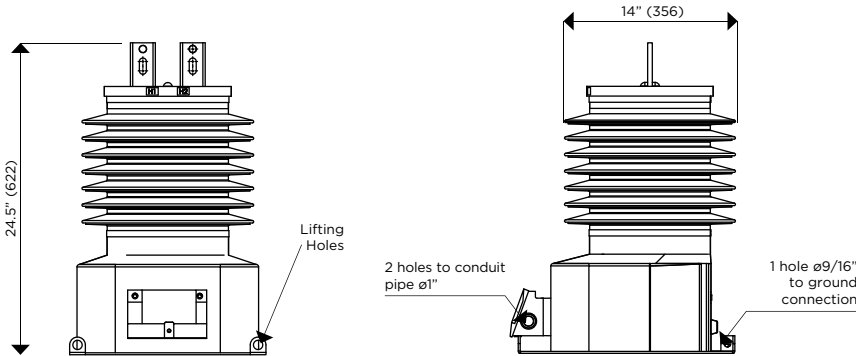
The external layer can be manufactured with Hydrophobic Cycloaliphatic Epoxy Resin (HCEP) which improves service life expectancy due to its improved tracking and erosion resistance. HCEP additionally increases the transformer's weatherability and offers better performance in heavily polluted environments.

The core is built with high permeability grain oriented silicon steel laminations for low losses. The windings are copper wire with copper plate double isolation. The concentric distribution of the coils prevents magnetic flux leakage, achieving greater accuracy and higher capacity to withstand mechanical stresses in adverse operating conditions.

Partial Discharge measurements exceed IEEE C57.13 2008 requirements.

### Mechanical characteristics

Insulation Material	Colors	Weight (lbs.)	Creepage distance (in)	Strike distance (in)
Resin	Gray*	230	32.6	16



Drawing number: 4286284

CONNECTIONS	PRIMARY TERMINAL	GROUND CONNECTOR	SECONDARY TERMINAL	MARKING (Single Primary Ratio)	ONE SECONDARY
	 Type: NEMA-2 Material: Copper	 Type: TE-12 250 Material: Copper Range: 4TRE-250MCM	 Type: Quick Connector Material: Brass		

Approximate dimensions in inches (mm).  
\*Brown color available upon request.

# KM-25

## 25 kV COMBINED TRANSFORMER

### Electrical characteristics

Code (CEP)	Code (HCEP)	Current Ratio (Primary: Secondary)	Continuous Thermal Current Rating Factor @ 30°C	Short-time Thermal Current (kA/1s)	Short-time Mechanical Current (kA <sub>peak</sub> )	IEEE Metering Accuracy [Current Transformer]	IEEE Metering Accuracy [Voltage Transformer]	Nominal Voltage System (kV)	BIL (kV)	Power-Frequency Withstand Voltage (1 min)	
										Primary & Secondary (kV <sub>rms</sub> )	Secondary Winding (kV <sub>rms</sub> )
770061016	770066029-H	5:5	1.5	0.5	1.4	0.3 B-0.5	0.3 W,X,M,Y/0.6Z	25	150	50	2.5
770061026	770066028-H	10:5	1.5	1	2.7	0.3 B-0.5	0.3 W,X,M,Y/0.6Z	25	150	50	2.5
770061036	770066027-H	15:5	1.5	1.5	4.1	0.3 B-0.5	0.3 W,X,M,Y/0.6Z	25	150	50	2.5
770061046	770066026-H	20:5	1.5	2	5.4	0.3 B-0.5	0.3 W,X,M,Y/0.6Z	25	150	50	2.5
770061056	770066025-H	25:5	1.5	2.5	6.8	0.3 B-0.5	0.3 W,X,M,Y/0.6Z	25	150	50	2.5
770061066	770066024-H	30:5	1.5	3	8.1	0.3 B-0.5	0.3 W,X,M,Y/0.6Z	25	150	50	2.5
770061076	770066023-H	40:5	1.5	4	10.8	0.3 B-0.5	0.3 W,X,M,Y/0.6Z	25	150	50	2.5
770061086	770066022-H	50:5	1.5	5	13.5	0.3 B-0.5	0.3 W,X,M,Y/0.6Z	25	150	50	2.5
770061096	770066021-H	75:5	1.5	7.5	20.3	0.3 B-0.5	0.3 W,X,M,Y/0.6Z	25	150	50	2.5
770061106	770066020-H	100:5	1.5	10	27	0.3 B-0.5	0.3 W,X,M,Y/0.6Z	25	150	50	2.5
770061116	770066019-H	150:5	1.5	15	40.5	0.3 B-0.5	0.3 W,X,M,Y/0.6Z	25	150	50	2.5
770061126	770066018-H	200:5	1.5	20	54	0.3 B-0.5	0.3 W,X,M,Y/0.6Z	25	150	50	2.5
770061136	770066017-H	300:5	1.5	30	81	0.3 B-0.5	0.3 W,X,M,Y/0.6Z	25	150	50	2.5
770061146	770066016-H	400:5	1.5	40	108	0.3 B-0.5	0.3 W,X,M,Y/0.6Z	25	150	50	2.5
770061156	770066015-H	600:5	1.0	60	162	0.3 B-0.5	0.3 W,X,M,Y/0.6Z	25	150	50	2.5
770061166	770066014-H	800:5	1.0	60	162	0.3 B-0.5	0.3 W,X,M,Y/0.6Z	25	150	50	2.5
770061176	770066013-H	1000:5	1.0	60	162	0.3 B-0.5	0.3 W,X,M,Y/0.6Z	25	150	50	2.5
770061186	770066012-H	1200:5	1.0	60	162	0.3 B-0.5	0.3 W,X,M,Y/0.6Z	25	150	50	2.5
770064086	770066011-H	10/20:5	2.0/1.5	2	5	0.3 B0.2/B-0.5	0.3 W,X,M,Y/0.6Z	25	150	50	2.5
770064086	770066010-H	25/50:5	2.0/1.5	5	12.5	0.3 B0.2/B-0.5	0.3 W,X,M,Y/0.6Z	25	150	50	2.5
770064126	770066009-H	100/200:5	2.0/1.5	20	50	0.3 B0.2/B-0.5	0.3 W,X,M,Y/0.6Z	25	150	50	2.5
770064136	770066008-H	150/300:5	2.0/1.5	30	75	0.3 B0.2/B-0.5	0.3 W,X,M,Y/0.6Z	25	150	50	2.5
770066136	770066004-H	150/300:5	4.0/2.0	30	75	0.3 B0.2/B-0.5	0.3 W,X,M,Y/0.6Z	25	150	50	2.5
770064156	770066007-H	300/600:5	2.0/1.5	60	150	0.3 B0.2/B-0.5	0.3 W,X,M,Y/0.6Z	25	150	50	2.5
770064176	770066006-H	500/1000:5	2.0/1.2	75	127.5	0.3 B0.2/B-0.5	0.3 W,X,M,Y/0.6Z	25	150	50	2.5
770064186	770066005-H	600/1200:5	2.0/1.0	90	162	0.3 B0.2/B-0.5	0.3 W,X,M,Y/0.6Z	25	150	50	2.5
<b>High Accuracy Extended Range 1% nominal current to Rating Factor</b>											
770067126	770066003-H	200:5	3.0	20	50	0.15 B-0.5	0.3 W,X,M,Y/0.6Z	25	150	50	2.5
770068126	770066002-H	200:5	1.5	20	50	0.15 B-1.8	0.3 W,X,M,Y/0.6Z	25	150	50	2.5
770068176	770066001-H	1000:5	1.5	75	127.5	0.15 B-1.8	0.3 W,X,M,Y/0.6Z	25	150	50	2.5

Approximate dimensions in inches.

### Voltage Ratings

VT Ratio	Primary (V)	Secondary (V)	Thermal Burden (VA)	Continuous Rated Voltage Factor (Un)	Rated Voltage Factor 30s (Un)
120:1	14400/24940GY	120	750	1.25	1.5

Additional VT ratios are available. Please contact Artech for details.

### Notes:

.....  
 .....  
 .....  
 .....  
 .....